



Chick-fil-A

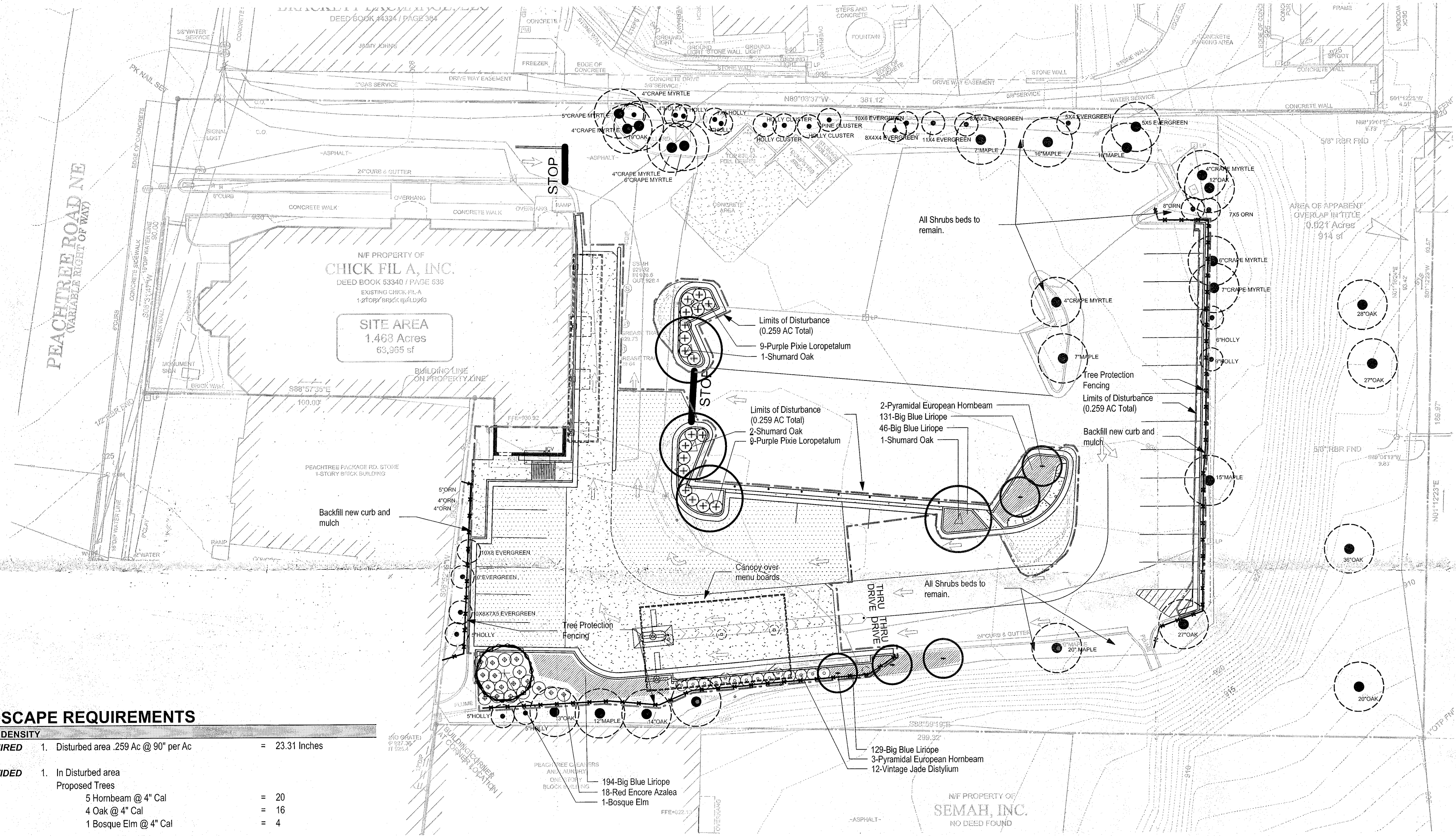
Chick-fil-A
5200 Buffington Road
Atlanta, Georgia 30349-2998

manley
LAND DESIGN
Landscape Architecture

770.442.8171 tel
770.442.1123 fax

Manley Land Design, Inc.
51 Old Canton Street
Alpharetta, Georgia 30009

manleylanddesign.com



LANDSCAPE REQUIREMENTS

A. TREE DENSITY

REQUIRED	1. Disturbed area .259 Ac @ 90" per Ac	= 23.31 Inches
PROVIDED	1. In Disturbed area Proposed Trees	
	5 Hornbeam @ 4" Cal	= 20
	4 Oak @ 4" Cal	= 16
	1 Bosque Elm @ 4" Cal	= 4
	Total Inches in disturbed area	= 40

B. RECOMPENSE CALCULATION

REQUIRED	1. \$ = \$100 [(# trees destroyed + # trees lost) - # trees replaced] + \$30 [(DBH inches destroyed + DBH inches lost) - caliper inches replaced]	
PROVIDED	1. \$ = \$100 [(8 + 0) - 10] + \$30 [(65 + 0) - 40]	=
		-\$200 + \$750
		= \$550

C. TREE REPLACEMENT

REQUIRED	1. All good to fair trees removed must be replaced with trees of equal cumulative size	
	Trees Removed	
	Ornamental	4 DBH
	Crape Myrtle	4
	Crape Myrtle	4
	Crape Myrtle	4
	Crape Myrtle	4
	Ornamental	6
	Oak	19
	Oak	20
	Total Inches Removed	65 DBH
PROVIDED	1. Replacement Trees	
	5 Hornbeam @	4 Cal = 20
	4 Oak @	4 Cal = 16
	1 Bosque Elm @	4 Cal = 4
	Total Inches Replaced	= 40

Invasive or DDH trees have not been determined at this time

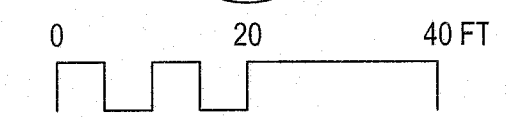
PLANT LIST

Qty	Botanical Name	Common Name	Scheduled Size	Remarks
Trees				
5	Carpinus betulus 'Columnaris'	Pyramidal European Hornbeam	4" Cal.; 12'-14" Hgt	B & B; Single Straight Leader
4	Quercus shumardii	Shumard Oak	4" Cal.; 14'-16" Hgt	B & B; Single Straight Leader
1	Ulmus parvifolia 'Bosque'	Bosque Elm	4" Cal.; 14'-16" Hgt	B & B
Shrubs				
18	Azalea indica 'Red Encore'	Red Encore Azalea	3 Gal.; Full 15"-18" OA	
12	Distylium 'Vintage Jade'	Vintage Jade Distylium	3 Gal.	2' hgt x 5' spr in 5 years
18	Loropetalum 'Purple Pixie'	Purple Pixie Loropetalum	3 Gal.	
Groundcovers				
500	Liriope muscari 'Big Blue'	Big Blue Liriope	4" Pot	Plant 15" O.C.

LEGEND

- EXISTING TREE TO BE REMOVED
CRITICAL ROOT ZONE 1'R=1"DBH
- EXISTING TREE TO REMAIN
- TREE PROTECTION FENCING
- LIMITS OF DISTURBANCE
- PREVIOUS IMPACT AREA
- PROPOSED IMPACT AREA

Office of Planning
2-18-104
AUG 31 2018
95 Trinity Ave, S.W.
Ste 3350
Atlanta, GA



CHICK-FIL-A
Peachtree at Collier Rd
1901 Peachtree Rd. Atlanta, GA

FSU# 1262

REVISION SCHEDULE
NO. DATE DESCRIPTION

MLD PROJECT # 2018107
PRINTED FOR PERMIT
DATE 6.27.18
DRAWN BY SLM

PERMIT Tree Replacement Plan

SHEET NUMBER
L-102