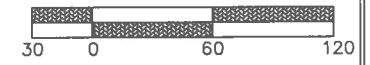


GENERAL NOTES:

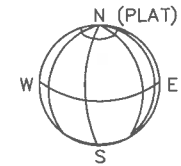
- 1: This Plat has been prepared without the benefit of a current title report. Easements or encumbrances may exist that are not shown on this plat.
- 2: This plat is subject to any restrictions, easements, covenants or restrictions that may exist either written or unwritten.
- 3: Underground utilities not shown hereon may exist. The Surveyor does not take responsibility for absence or presence of any such utilities.
- 4: No Geodetic monuments were found within 500 feet of this site
- 5: This Plat has been prepared for the exclusive use of the person(s) or entities named hereon.

REFERENCE: ALTA/ACSM BOUNDARY SURVEY FOR THE TRUST FOR PUBLIC LAND, CHICAGO TITLE INSURANCE COMPANY, AND THE CITY OF ATLANTA BY AGILITY SURVEYING CO., INC. DATED 1/25/06 AND LAST REVISED 5/3/06

FLOOD HAZARD NOTE: THIS PROPERTY IS NOT LOCATED IN A FLOOD HAZARD AREA AS DEFINED BY FIRM MAP OF FULTON COUNTY 13121C0376G DATED SEPTEMBER 18, 2013



1" = 60'



- TREE SYMBOLS
X = DIAMETER IN INCHES
- (X) OAK
 - (X) HARDWOOD
 - (X) MAPLE
 - (X) POPLAR
 - (X) SWEETGUM
 - (X) MAGNOLIA
 - (X) MAPLE
 - (X) PINE

CURVE TABLE			
CURVE	LENGTH	RADIUS	BEARING
C1	403.14	2876.61	N19°41'12"E
C2	298.23	16650.23	N19°42'35"E

TOTAL AREA: 240,113 SQ FT, 5.51 AC
CALCULATED PLAT CLOSURE: 1:186,627

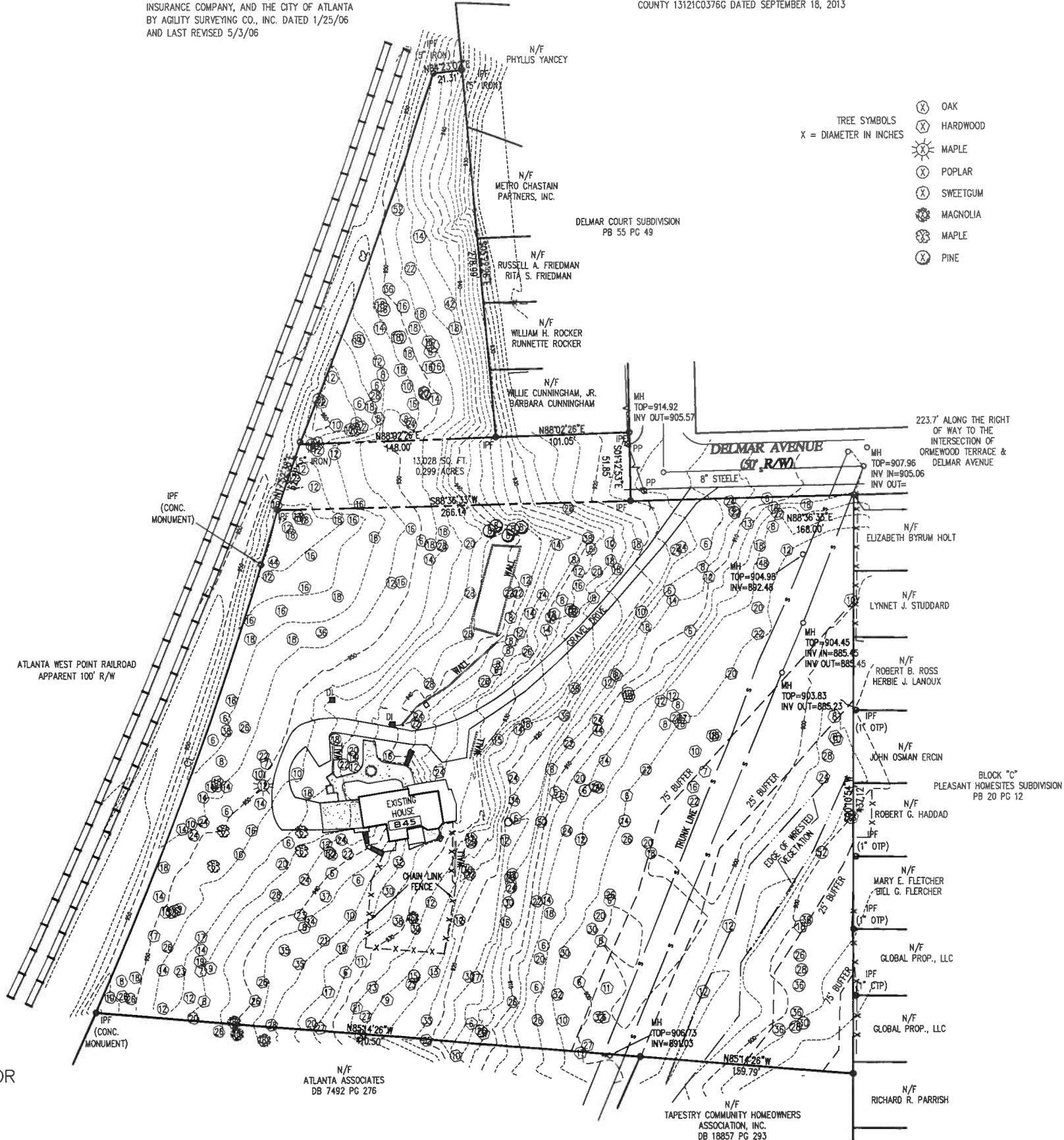
FIELD DATA:
TRAVERSE PRECISION: 1:10,000+
AND AN ANGULAR ERROR OF 2 SECONDS PER ANGLE
AND WAS UNADJUSTED

EQUIPMENT:
TOPCON GPT 3005 TOTAL STATION

BOUNDARY & TOPOGRAPHIC SURVEY FOR
FABRIC DEVELOPERS LLC

845 DELMAR AVENUE

CITY OF ATLANTA, FULTON COUNTY, GEORGIA
LAND LOT 11 & 22, DIST 14
DATE: MARCH 24, 2014



- LEGEND**
- EOP EDGE OF PAVEMENT (CURB)
 - PP POWER POLE
 - R/W RIGHT OF WAY
 - IPF IRON PIN FOUND (1/2" REBAR)
 - IPS 1/2" REBAR SET
 - SW SIDE WALK
 - CLEAN OUT
 - OHP OVERHEAD POWER
 - FH FIRE HYDRANT
 - CB CATCH BASIN
 - MH MANHOLE
 - WM WATER METER
 - WV WATER VALVE
 - GV GAS VALVE
 - GM GAS METER
 - LP LIGHT POLE
 - CONCRETE PAD



FOR
DEKALB SURVEYS, INC.
403. W. PONCE DE LEON
SUITE 106
DECATUR, GEORGIA 30030
404.373.9003

COPY RIGHT 2013—THIS 11 X 17
DRAWING AND REPRODUCTIONS
ARE THE PROPERTY OF THE
SURVEYOR AND MAY NOT BE
REPRODUCED, PUBLISHED OR USED
IN ANY WAY WITHOUT THE
WRITTEN PERMISSION OF THIS
SURVEYOR
DRAWN IN THE U.S.A.



www.dekalbsurveys.com